



# CO APCD Advisory Committee

May 12, 2020



CENTER FOR IMPROVING  
**VALUE** IN HEALTH CARE

# Agenda

- Opening Announcements
- Operational Updates
- CO APCD Scholarship Subcommittee
- Data Quality
- Regulatory Update/Data to Support Legislation
- Public Reporting
- CO APCD COVID-19 Analyses
- Data to Inform COVID-19 Efforts
- Ways to Collaborate





# Operational Updates

Ana English, MBA ●

CIVHC President and CEO



CENTER FOR IMPROVING  
**VALUE** IN HEALTH CARE

# CO APCD Sustainability – Funding Sources FY 2020-21

- State Related
  - CMS 50/50 – CMS conditional approval received. Pending CMS written letter. Methodology tied to actual APCD expenses
  - State General Fund – Pending JBC
  - Scholarship Funding – Eliminated by JBC May 6
  - State Medicaid Analytics Contract - Recurring Contract
- Non-State Related
  - Non-State CO APCD Data Requestors – Scholarship implications; other sources
  - Grant Related CO APCD Contracts – AHRQ/NBER Research Grant – 4 year grant expires 8/2020
  - COVID related grant opportunities

# CO APCD Sustainability – Funding Sources FY 2020-21

- CIVHC action taken to date
- What else can CIVHC and the CO APCD Advisory Committee do?

# Agenda

- Opening Announcements
- Operational Updates
- **CO APCD Scholarship Subcommittee**
- Data Quality
- Regulatory Update/Data to Support Legislation
- Public Reporting
- CO APCD COVID-19 Analyses
- Data to Inform COVID-19 Efforts
- Ways to Collaborate





# CO APCD Scholarship Subcommittee

Peter Sheehan ●

CIVHC VP of Business Development



CENTER FOR IMPROVING  
**VALUE** IN HEALTH CARE

# FY 20 Scholarship – YTD Summary

FY 2020-21 funding eliminated per JBC action May 6

## FY 2019 - 2020

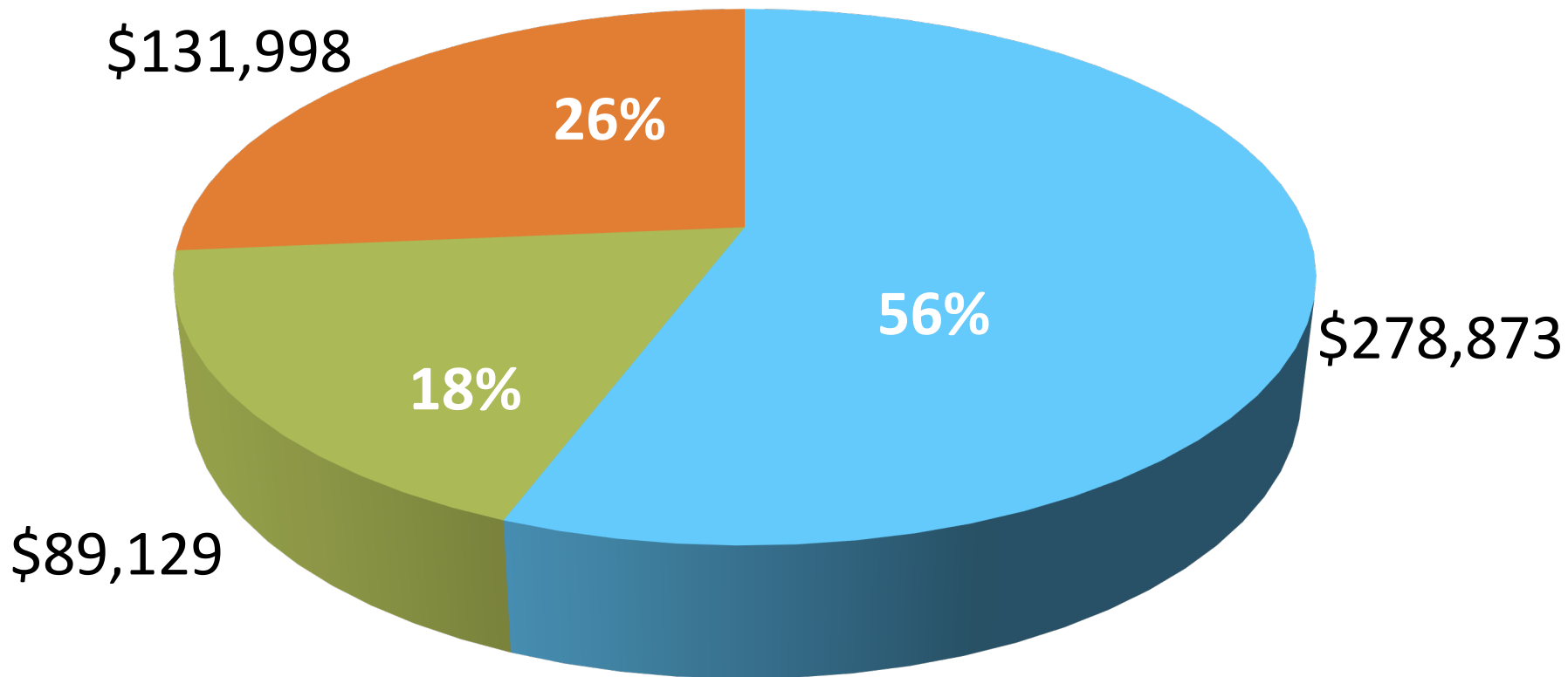
### Applications Approved

- 25 projects totaling \$500,000 in Scholarship Funding
- **\$20,000** - Average Scholarship Amount Awarded
- **\$ 5,491** – Average Data Requestor Portion of the data licensing fee



# FY 20 Scholarship – YTD Summary

## FY 2020 Project Breakdown by Dollar Amount

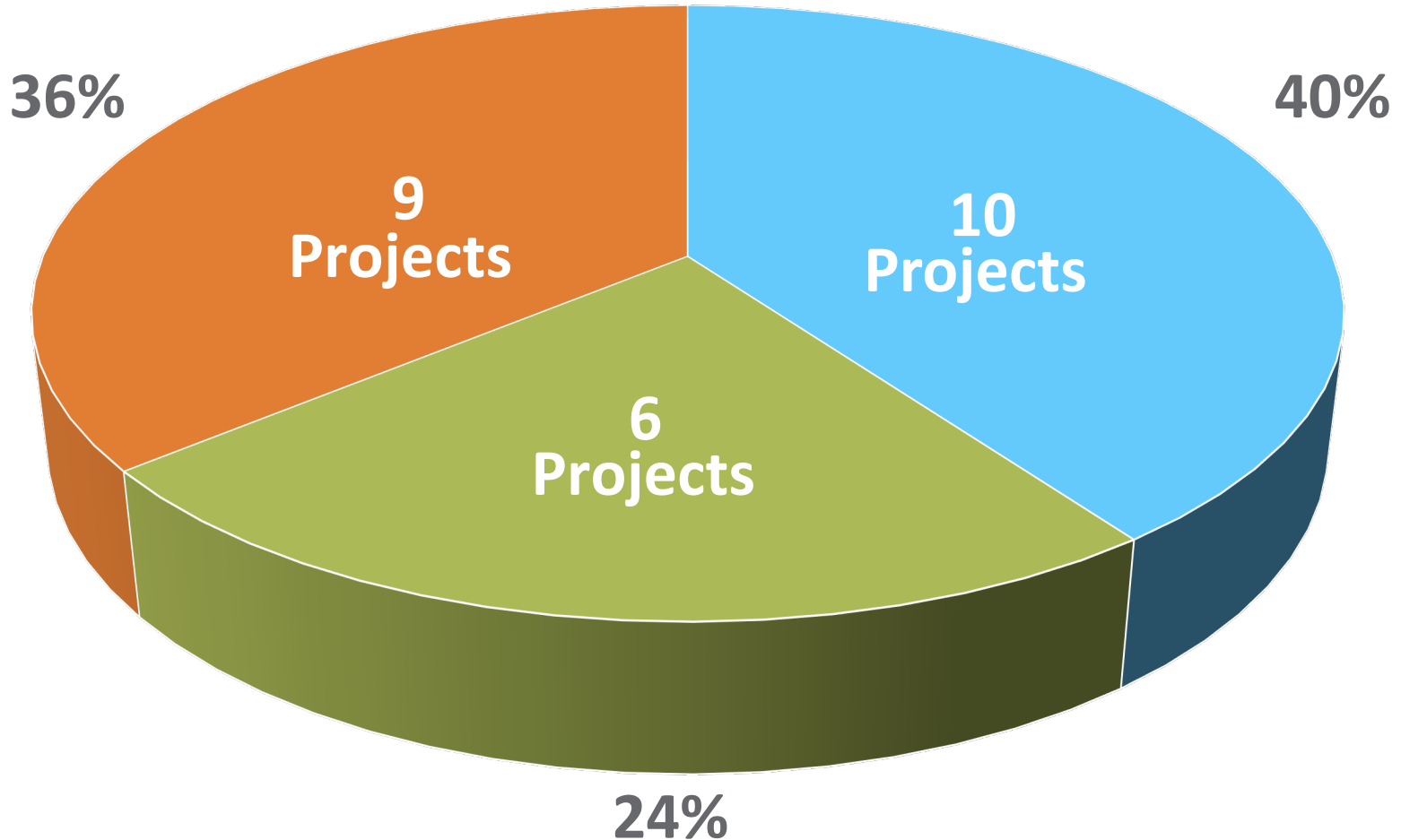


■ Academic Researchers ■ State Agencies/Govt Entities ■ Non-Profits/Associations

**Employers/Purchasing Alliances accounted for 26% of the dollars allocated and consist of non-profit organizations & govt. entities**

# FY 20 Scholarship – YTD Summary

## FY 2020 Breakdown of Projects by Requestor Type



■ Academic Researchers ■ State Agencies/Govt Entities ■ Non-Profits/Associations

# FY 20 Scholarship – YTD Summary

<b>Data Requestor Organization</b>	<b>Project</b>	<b>Scholarship Amount</b>
<b>Academic/Research Requests</b>		
CU Anschutz - Division of Health are Policy & Research	20.01 HIE Participation & Post Acute Care Patient Outcomes	\$39,066
CU Colorado Clinical & Transitional Sciences Institute	19.96 Lung Cancer Screening & Proximity Report	\$22,132
CU School of Medicine - Dept. of Neurology	19.87 Neurology Adolescent Stroke Risk Factors	\$33,392
CU Denver	19.03 Emergency Care following Bariatric Surgery	\$41,396
Univ of Colorado Pediatrics & Children's Hospital	19.75 Parent's as their Child's Certified Nursing Aide Program	\$40,589
CU Anschutz - Division of Pulmonary Svc & Critical Care	20.54 Determining Healthcare Trajectories for Patients Experiencing Critical Illness in the State of Colorado	\$29,748
CU School of Medicine - Geriatric Medicine	20.57 Impact of Respite Care for persons affected by Alzheimer's	\$20,698
CU Anschutz - Department of Orthopedics	20.09 Exploring Socioeconomic Bias in choice of Ortho treatment	\$27,865
CU Anschutz	20.79 Steroid Related Pneumocystis Pneumonia in Colorado	\$20,787
University of Denver	20.37 Incidence of Cancer Dx in Rocky Flats Region	\$3,200
	Sub-total	<b>\$278,873</b>

# FY 20 Scholarship – YTD Summary

<b>Data Requestor Organization</b>	<b>Project</b>	<b>Scholarship Amount</b>
<b>State Agency/Govt. Entity Requests</b>		
CO Dept. of Public Health & Environment	20.04 Data Extract Enhancement	\$11,811
CO Dept. of Labor & Employment	20.07 Trauma Activation Fees	\$800
CO Dept. of Human Services	20.56 Children's Behavioral Health Mapping	\$21,504
Garfield County*	20.53 Garfield County Cost Analysis	\$18,995
Mesa County Public Health*	20.23 Mesa County Health Care Cost Analysis	\$18,995
N. Colorado Consortium: Larimer County*	19.114.1 Knee Replacement/Revision Episodes & Referral Patterns	\$17,024
	Sub-total	<b>\$89,129</b>
<b>Non-Profit Requests</b>		
9Health	19.191 Economic Value of 9Health Screenings	\$9,856
CO Cancer Coalition Lung Cancer Screenig Task Force	20.47 Lung Cancer Screening Environmental Scan Report	\$10,752
CO Consortium for Prescription Drug Abuse & Prevention	19.37 CO Opioid Use & Abuse Prevention Evaluation	\$33,510
Chafee Community Foundation*	20.38 Lake & Chaffee County Cost Analysis	\$18,995
Peak Health Alliance*	20.34 & 20.35 Limited Data Set & Custom Outmigration Report	\$35,482
Local First*	20.18 Southwest Health Alliance Cost Analysis	\$18,995
N. Colorado Consortium: SOCI*	19.114.2 Advanced Care Directives Code Evaluation	\$2,888
N. Colorado Consortium: CBGH*	19.114.4 Northern Colorado Low Value Care	\$1,520
	Sub-total	<b>\$131,998</b>
*Employer or Purchasing Alliance Request	<b>Total FY 20 Scholarship Dollars Allocated</b>	<b>\$500,000</b>

# Agenda

- Opening Announcements
- Operational Updates
- CO APCD Scholarship Subcommittee
- **Data Quality**
- Regulatory Update/Data to Support Legislation
- Public Reporting
- CO APCD COVID-19 Analyses
- Data to Inform COVID-19 Efforts
- Ways to Collaborate





# Data Quality

Vinita Bahl, DMD, MPP ●  
CIVHC VP of Data Analytics



CENTER FOR IMPROVING  
**VALUE** IN HEALTH CARE

# Proposal and Rationale

- Create Payer Forum, an assembly of senior leaders from payer organizations for the purpose of keeping them apprised of submission quality/problems and implications
- Introduced at February CO APCD Advisory Committee meeting
- CIVHC continues to pursue strategies to improve data quality (e.g., enhancement to validation process during data intake), but needs additional support from payers
- Senior leaders at payer organizations may not be aware of problems with submissions
- Intended to help resolve data submission problems affecting analyses for key initiatives

# Proposed Payer Forum Structure

- Group of key leaders (senior leaders or executives), each representing a payer
- Periodic meetings to discuss standards for timeliness and quality of submissions, use of CO APCD data for key initiatives and impact of data submission problems on results
- Provide regular communication about submissions
  - Standard reporting of key submission attributes and description of problems
- Follow-up phone calls when significant problems arise



# Status Update

- Identified one key leader/executive representing each payer
- Send invitations to participate this month
- Complete development of high-level, standardized report of data quality problems for distribution to members in June

# Agenda

- Opening Announcements
- Operational Updates
- CO APCD Scholarship Subcommittee
- Data Quality
- **Regulatory Update/Data to Support Legislation**
- Public Reporting
- CO APCD COVID-19 Analyses
- Data to Inform COVID-19 Efforts
- Ways to Collaborate





# Regulatory Update and Data to Support Legislation

Vinita Bahl, DMD, MPP ●

CIVHC VP of Data Analytics

Cari Frank, MBA ●

CIVHC VP of Communication and Marketing



CENTER FOR IMPROVING  
**VALUE** IN HEALTH CARE

# Regulatory Update

- DSG v11.5 - 2020 Alternative Payment Model and Drug Rebate Proposed Changes
  - Add a requirement that payers submit APM data for members residing in Colorado
  - Add a requirement that payers report APM members and payments to providers by insurance product type code to permit analysis by payer type
  - Change the definition of primary care to the one adopted by the Colorado Primary Care Payment Reform Collaborative
  - Change the APM categories the Health Care Payment Learning & Action Network (HCP LAN) categories

# Regulatory Update

- DSG v11.5 - 2020 Alternative Payment Model and Drug Rebate Proposed Changes (continued)
  - Require payers to submit a supplement to the drug rebate file describing the contractual arrangement they have with their pharmacy benefit manager (PBM), including the percentage of drug manufacturer rebates and other compensation the PBM conferred to the payer
- The Executive Director Hearing for DSG v11.5 was held on April 15. The Rule was passed and will go into effect later in 2020.

# Data to Support Legislation

- SB 20-107 / HB 20-1160 – related to drug pricing and transparency
  - CIVHC provided information for fiscal note consideration for both bills and testified with background information for SB 20-107 regarding what information is in the CO APCD for specialty drugs and expenditures.
- SB 20-005 Consumer Cost-Sharing Study
  - The bill was converted to a study. CIVHC provided estimated fiscal note budget information to provide data for a portion of the study at DOI's request.

# Data to Support Legislation

- Total Cost of Care
  - The CO APCD and CIVHC, as the administrator, are named in the draft bill and would be providing information regarding cost of care. CIVHC provided comments on the draft language.
- Colorado Option
  - CIVHC provided information for this bill last in preparation for its introduction and shared Outmigration Reports with the DOI this year.

# Agenda

- Opening Announcements
- Operational Updates
- CO APCD Scholarship Subcommittee
- Data Quality
- Regulatory Update/Data to Support Legislation
- **Public Reporting**
- CO APCD COVID-19 Analyses
- Data to Inform COVID-19 Efforts
- Ways to Collaborate







# Public Reporting

Cari Frank, MBA ●

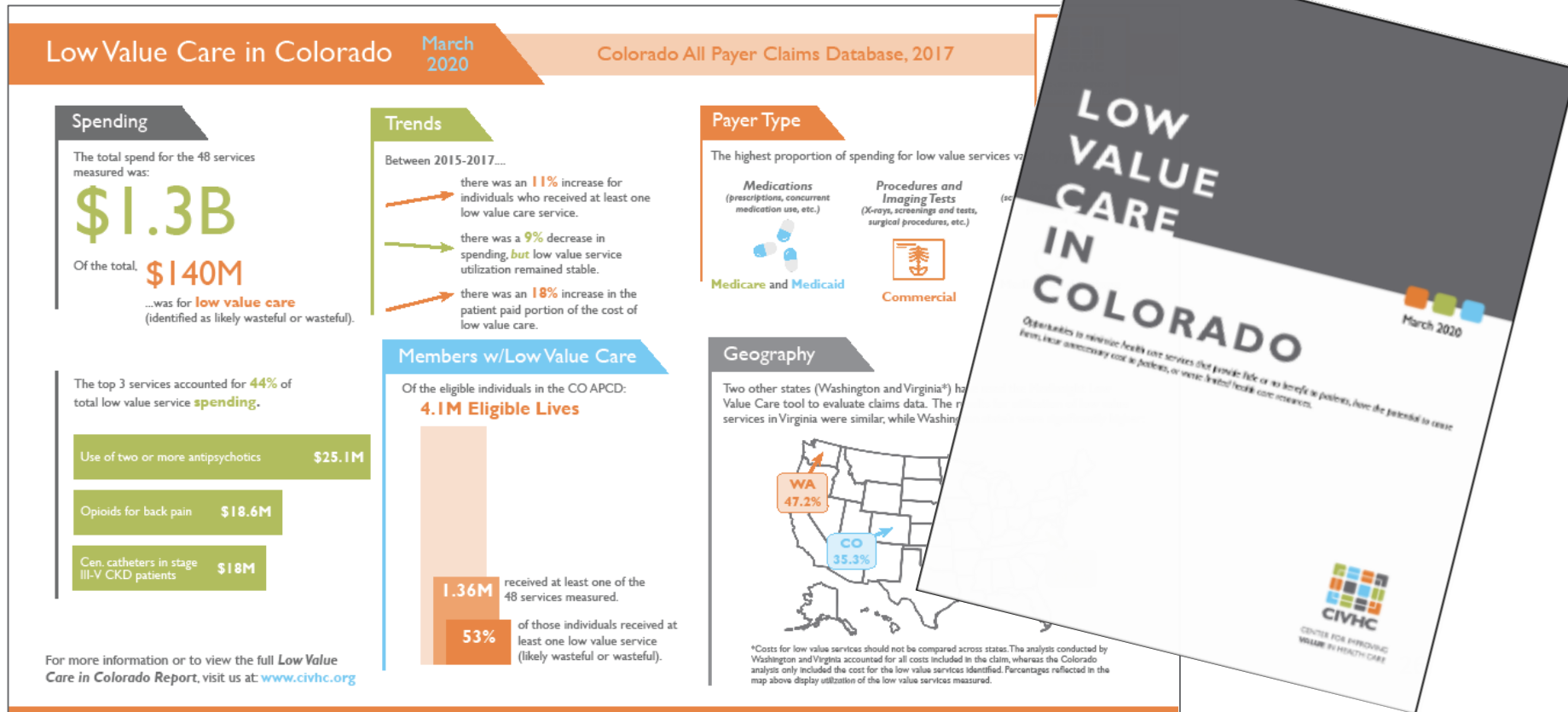
CIVHC VP of Communication and Marketing



CENTER FOR IMPROVING  
**VALUE** IN HEALTH CARE

# Public Reporting – Low Value Care Released March 25, 2020

- Dedicated webpage as analytic Focus Area
  - Infographic, Report, Custom Analysis sample
  - Will re-promote in upcoming months

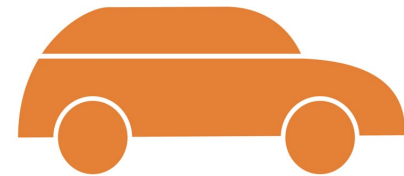


# Additional Public Releases

- **Data Byte: Advance Care Planning**
  - Volume and trends in use of advance care planning codes
- **Data Byte: Legislative District Medical and Pharmaceutical Expenditures**
  - Updated through 2018, trend information available
- **Chronic Condition Excel downloadable file**
  - Subset of current public chronic condition information for research request

# Upcoming Public Reporting Planned Releases (subject to change)

- COVID-19 Analyses first priority
- Community Dashboards – beginning of June
- Shop for Care updates – end of June (preview period mid-May)



# Agenda

- Opening Announcements
- Operational Updates
- CO APCD Scholarship Subcommittee
- Data Quality
- Regulatory Update/Data to Support Legislation
- Public Reporting
- **CO APCD COVID-19 Analyses**
- Data to Inform COVID-19 Efforts
- Ways to Collaborate





# CO APCD COVID-19 Analyses

CIVHC Team



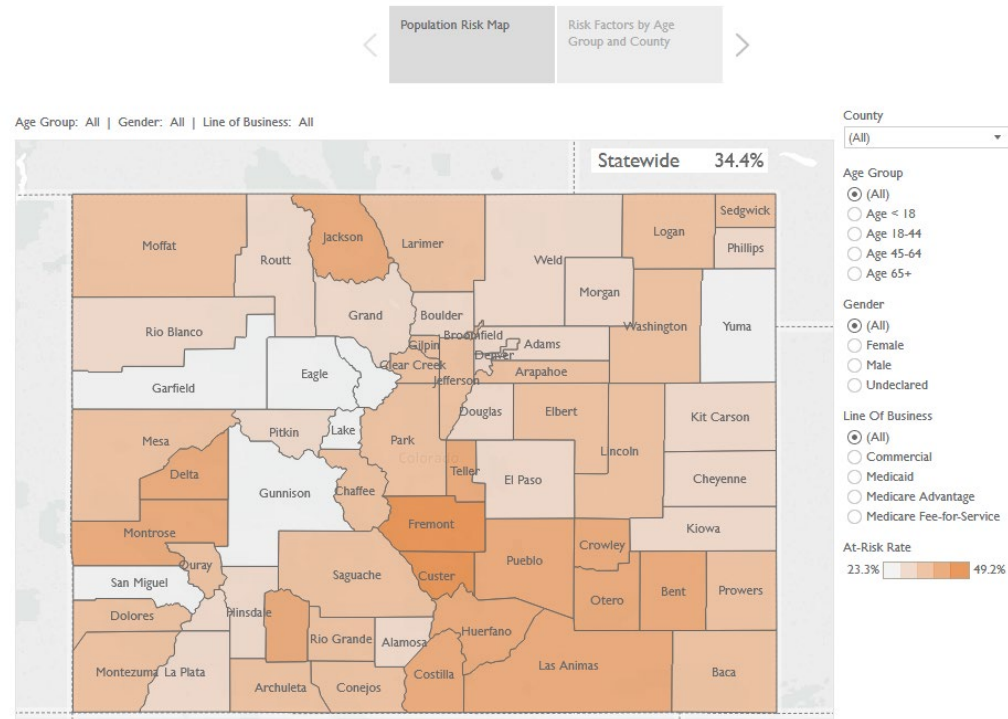
CENTER FOR IMPROVING  
**VALUE** IN HEALTH CARE

# COVID-19 Analysis Released Yesterday

- Population Risk of Severe Illness Analysis
  - Counties with concentrations of people at higher risk of severe illness to help with resource planning now and into the future

Populations at Risk for Serious Illness from COVID-19

- New Dedicated COVID-19 Resource Page
- [www.civhc.org/covid-19/](http://www.civhc.org/covid-19/)



# Additional Upcoming COVID-19 Analyses

- Elective Surgery Postponement
  - Estimate the potential financial impact of a temporary cessation of elective procedures for commercially-insured members.
- Telehealth
  - Analyze historic telehealth usage in Colorado as a benchmark and to inform efforts to increase access for underserved areas and those at-risk.



# Future Potential CO APCD COVID-19 Related Analyses

- Potential: Near Term – Next 2-6 Months
  - Understanding churn in health care coverage
  - Identifying how telemedicine is being used by specialties and cost impact
  - Evaluating underuse of services and cost impact as a result of moratorium on elective services
  - Impact on mental health/behavioral health through evaluation of prescription medication and telemedicine visits
  - Assessing premium impact and member cost sharing variation among payers

# Future Potential CO APCD COVID-19 Related Analyses

- Potential: 6+ Mos – Requires significant data runout
  - Analysis of mortality and reasons for deaths in Colorado, specific to SDoH, vulnerable populations and access to care
  - Evaluating underuse of services on outcomes for chronic conditions
  - Re-insurance pool qualifying members impact
  - Impact to non-COVID-19 patients in terms of outcomes

# Future Meetings

9am – 11am

August 11, November 10

