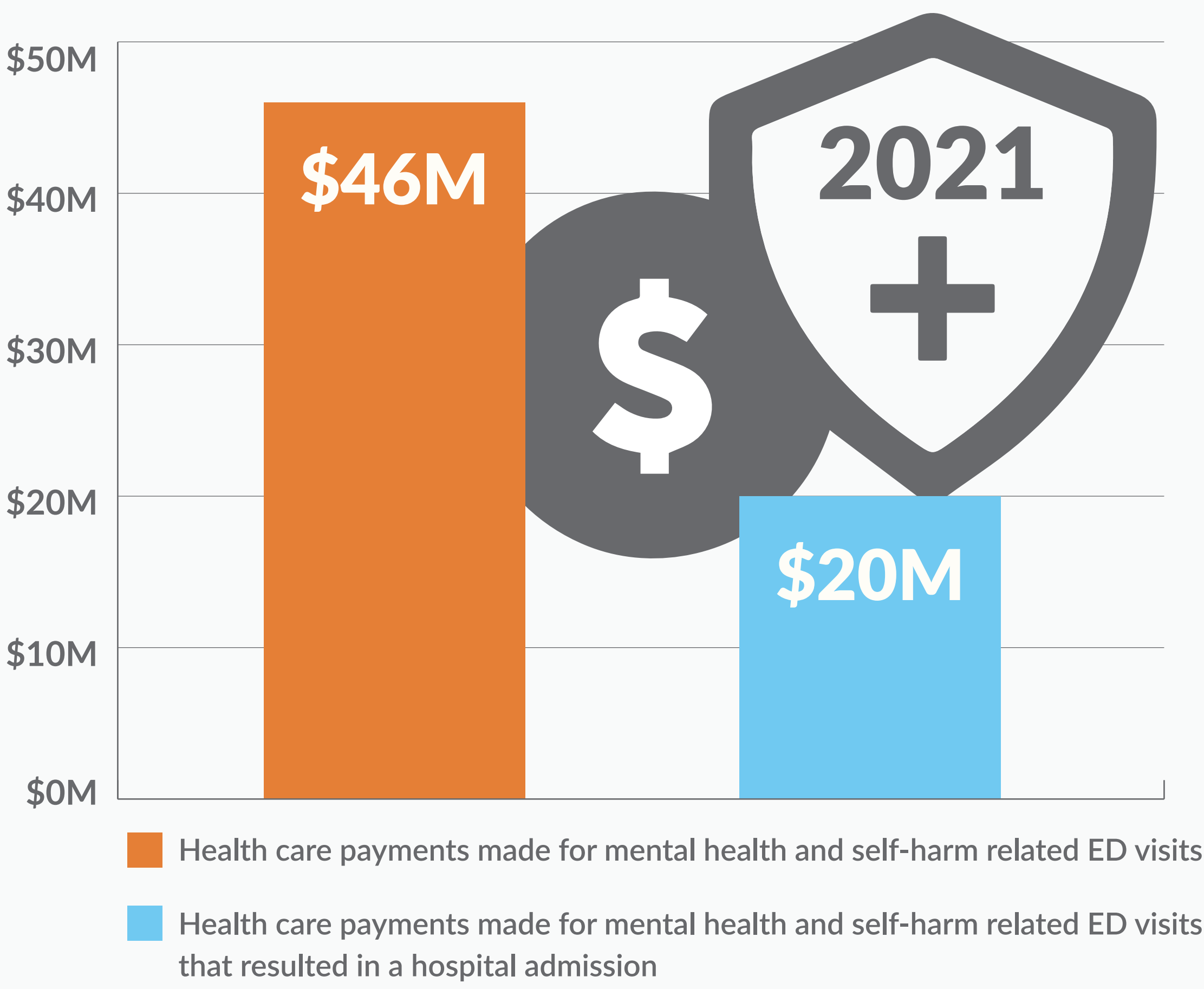
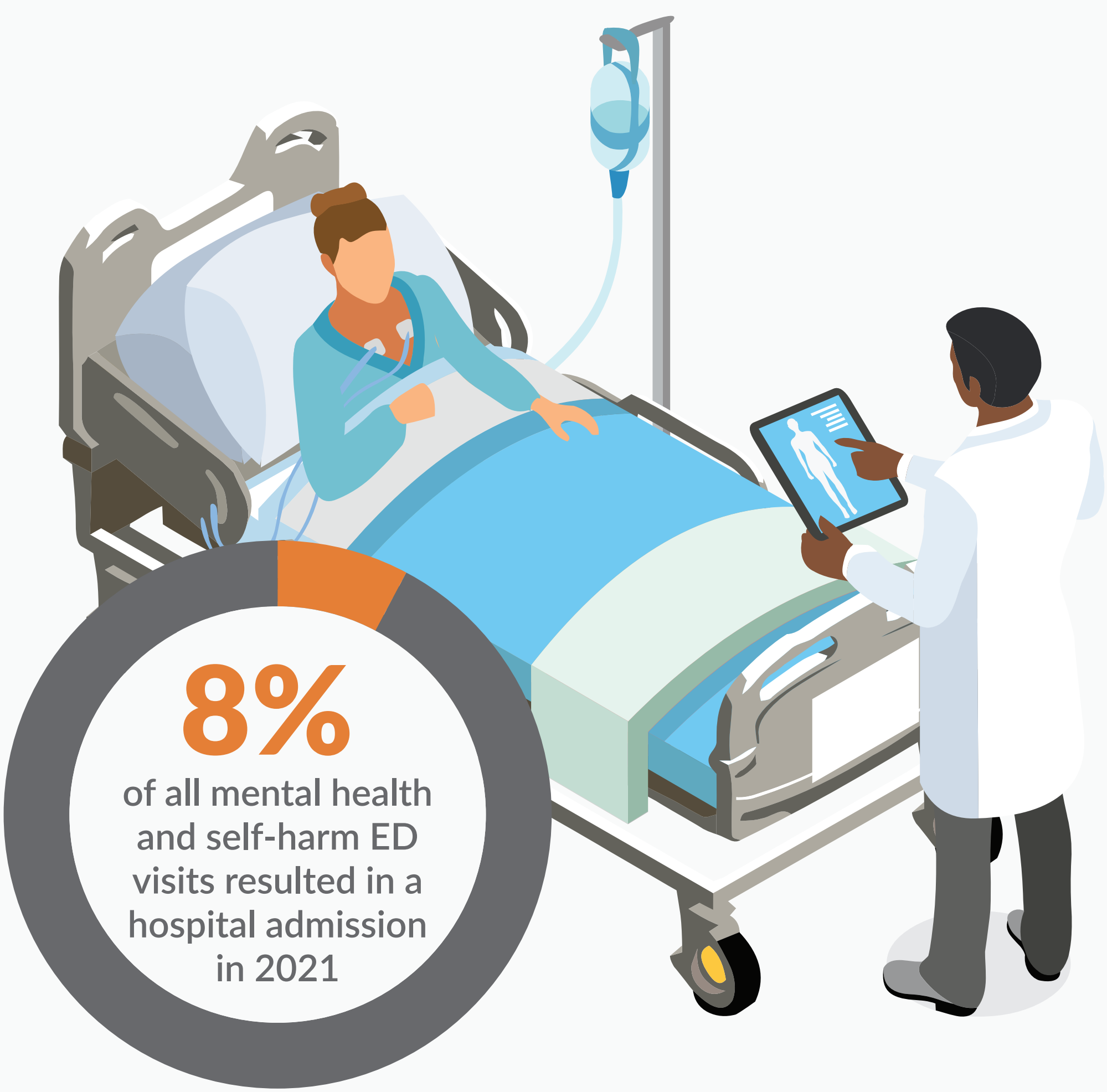
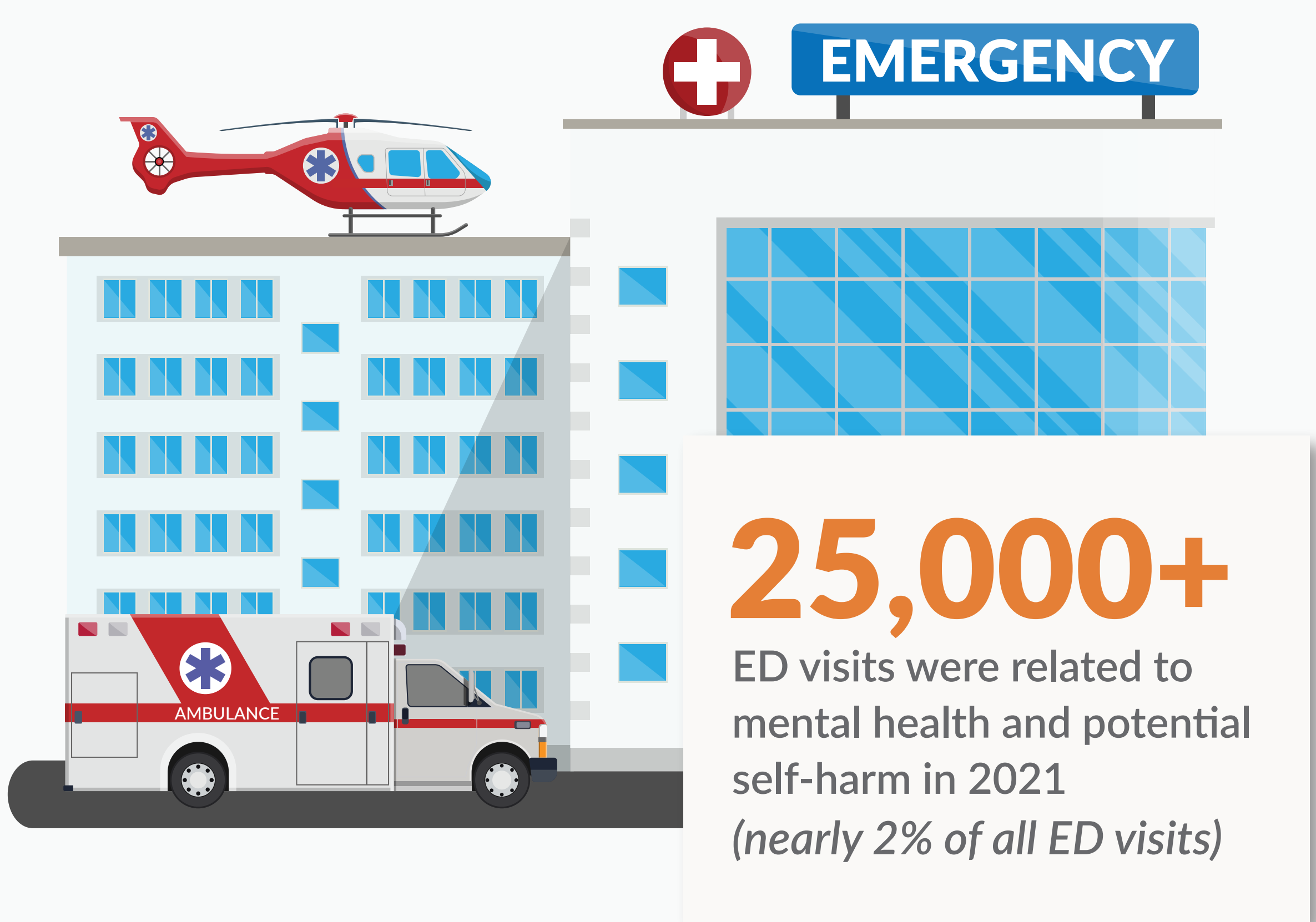


Emergency Department

Use for Mental Health and /or Potential Self-Harm

Colorado All Payer Claims Database | 2016 to 2021 Commercial, Medicaid, Medicare Fee-For-Service and Medicare Advantage

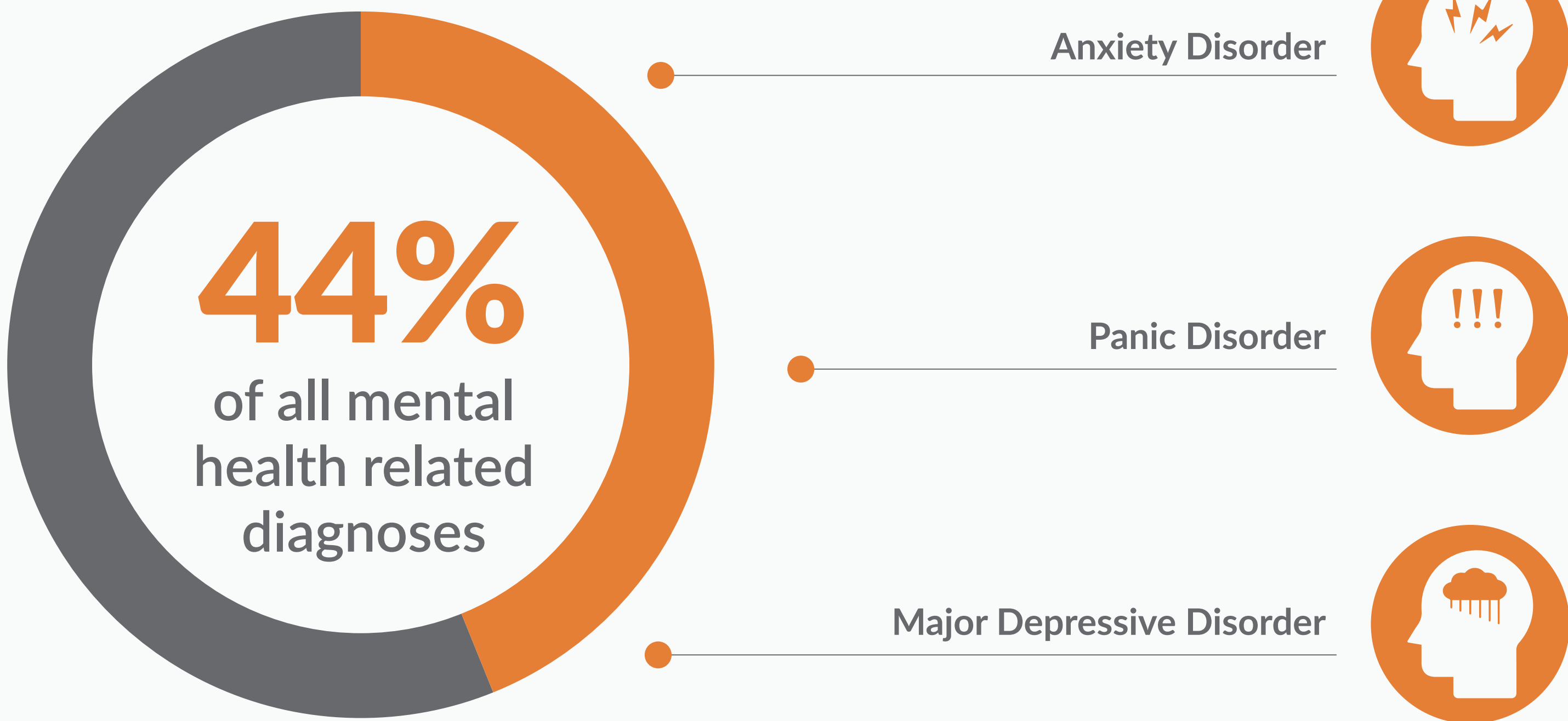
Coloradans living with mental illness don't always have access to comprehensive services or seek timely care to support their needs. Many efforts are underway in Colorado to improve the diagnosis and treatment of mental health conditions, reduce stigma related to seeking care, and expand coverage and access to services for those living with mental illness. Despite these efforts, across the state, the Emergency Departments (ED) remain a source of support for many Coloradans experiencing mental health or self-harm crises. This data from the Colorado All Payer Claims Database (CO APCD) provides a snapshot of utilization, cost and trends for visits to the ED with mental health or self-harm as a primary diagnosis.



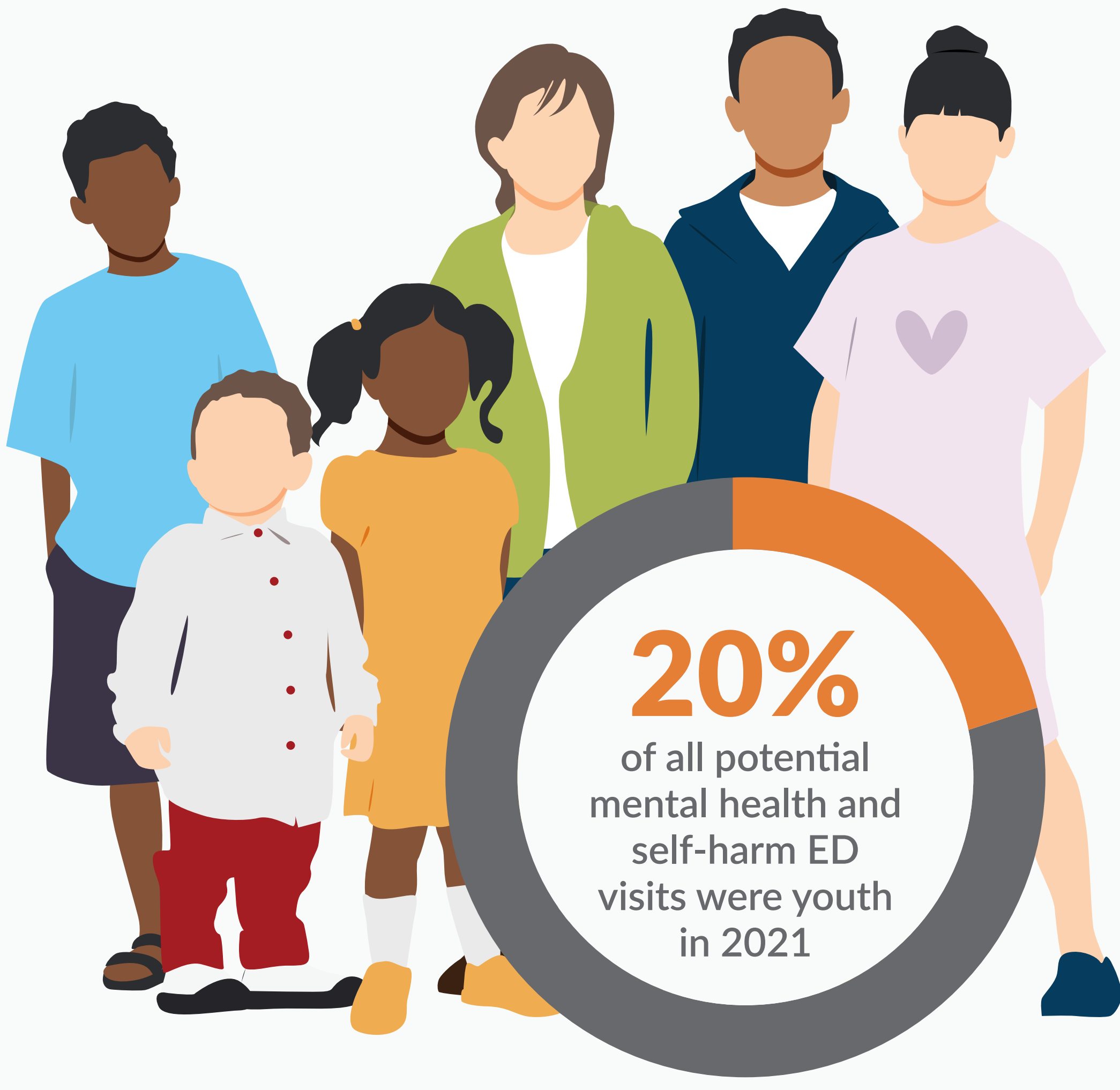
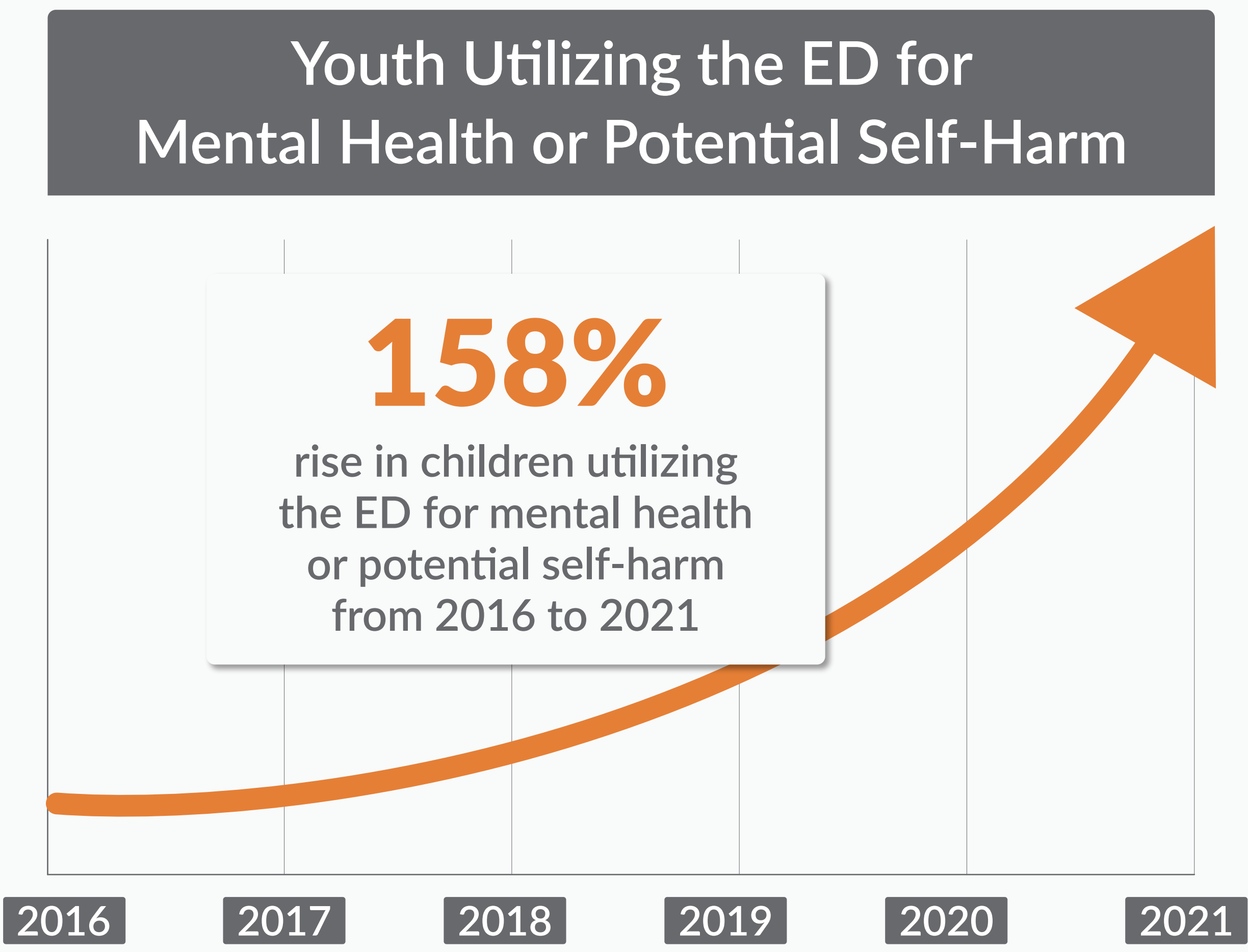
Top 3 Mental Health Related Diagnoses (all ages)

CIVHC
CENTER FOR IMPROVING
VALUE IN HEALTH CARE

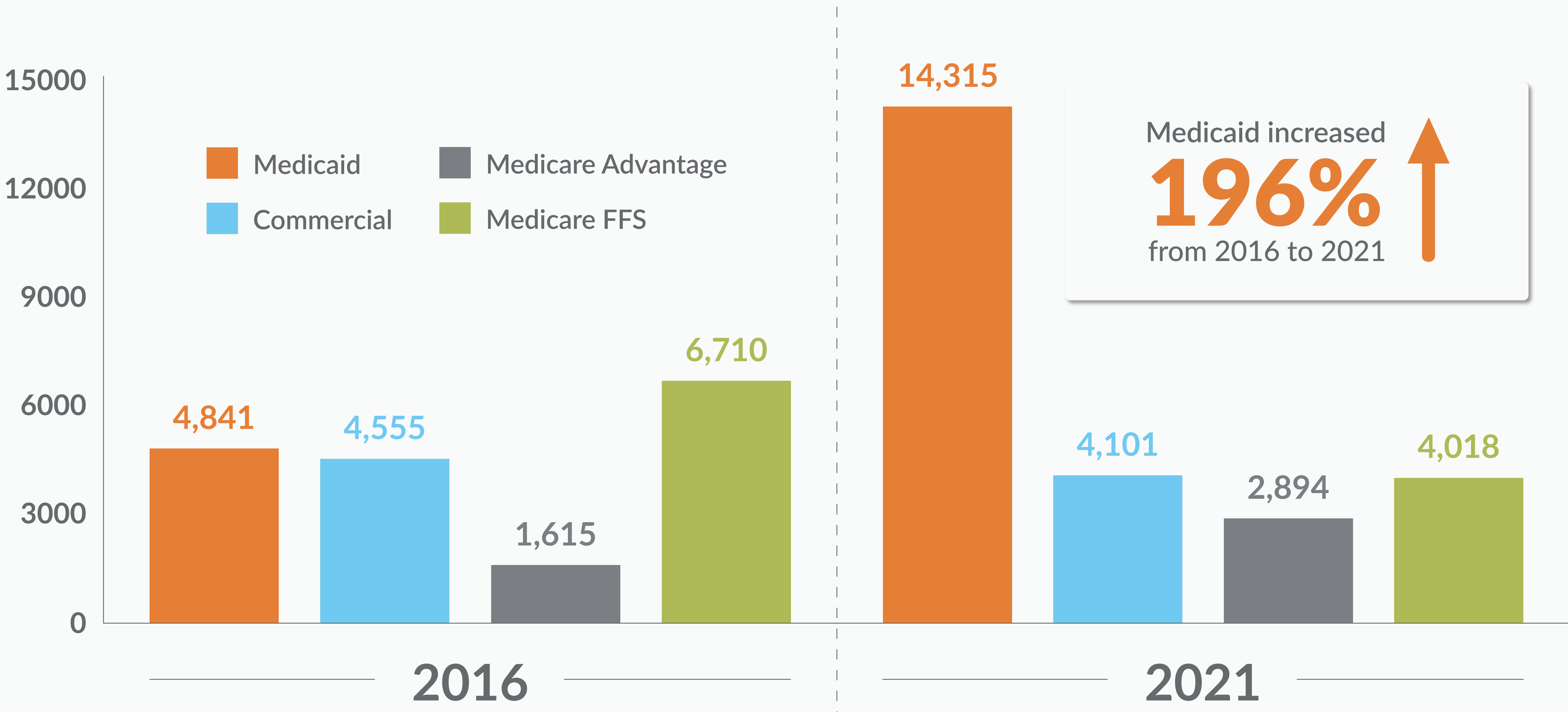
Access to the underlying dataset with information by payer, age group, and more is available at www.civhc.org.



A Closer Look at Youth under 18 in 2021



Trends in Number of ED Visits for Mental Health or Potential Self-Harm by Payer Type



This analysis is based on claims data submitted by health insurance payers to the Colorado All Payer Claims Database (CO APCD) for care provided from 2016-2021 and paid for through Medicaid, Medicare Fee-for Service, Medicare Advantage and commercial payers in the state. Volumes represent ED visits (free-standing or hospital-based) where the primary diagnosis was related to mental health or potential self-harm as defined by ICD-10 codes. For detailed methodology, please download the Excel dataset available at civhc.org.